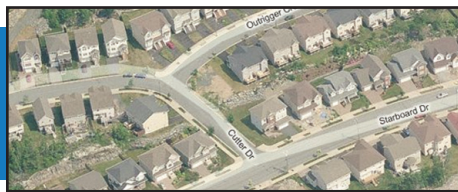
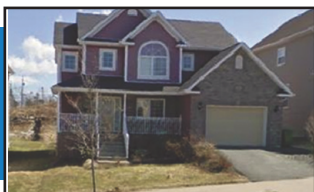


- Considering buying or selling?
- Want detailed info but not yet ready to talk to a REALTOR®?
- Tired of visiting many different websites to get everything you need including MLS® listings?

ViewPoint.ca has it all!

- Look around using Google Maps
- Boundaries for every property in HRM
- Every MLS® listing updated daily
- Current assessments on every property
- Street view photography
- Aerial photography
- School boundaries
- Neighbourhood-level information & trends



Property Details—ViewPoint.ca	
Property ID (PID):	12345678
Lot Size:	6,385 sq. ft.
Assessment:	\$313,600 (2010)
MLS® District:	20 — Bedford (Map)
MLS® Subdistrict:	20B (Map)
District Assessment Average:	\$248,050 (2,813 properties)
Subdistrict Average:	\$249,118 (1,063 properties)
Compared to District:	26% Higher
Compared to Subdistrict:	43% Higher

"Comparing other houses for sale or that have been sold in your area is a cinch!" - Mark, Halifax.

"Being able to zoom into our target areas in HRM is perfect!" - Lyndsay, Halifax.

"This is the most comprehensive MLS search tool that I have ever seen." - Dean, Bedford.

Every property.
Every listing.
Updated every day.



Look for our postcard
in your mailbox this weekend.



Find your next home at

ViewPoint.ca

A service of ViewPoint Realty Services Inc.